

Дистилляторы Кьельдаля серии DNP

Технические характеристики

По вопросам продаж и поддержки обращайтесь:

Алматы (727)345-47-04
Ангарск (3955)60-70-56
Архангельск (8182)63-90-72
Астрахань (8512)99-46-04
Барнаул (3852)73-04-60
Белгород (4722)40-23-64
Благовещенск (4162)22-76-07
Брянск (4832)59-03-52
Владивосток (423)249-28-31
Владикавказ (8672)28-90-48
Владимир (4922)49-43-18
Волгоград (844)278-03-48
Вологда (8172)26-41-59
Воронеж (473)204-51-73
Екатеринбург (343)384-55-89

Иваново (4932)77-34-06
Ижевск (3412)26-03-58
Иркутск (395)279-98-46
Казань (843)206-01-48
Калининград (4012)72-03-81
Калуга (4842)92-23-67
Кемерово (3842)65-04-62
Киров (8332)68-02-04
Коломна (4966)23-41-49
Кострома (4942)77-07-48
Краснодар (861)203-40-90
Красноярск (391)204-63-61
Курск (4712)77-13-04
Курган (3522)50-90-47
Липецк (4742)52-20-81

Магнитогорск (3519)55-03-13
Москва (495)268-04-70
Мурманск (8152)59-64-93
Набережные Челны (8552)20-53-41
Нижний Новгород (831)429-08-12
Новокузнецк (3843)20-46-81
Ноябрьск (3496)41-32-12
Новосибирск (383)227-86-73
Омск (3812)21-46-40
Орел (4862)44-53-42
Оренбург (3532)37-68-04
Пенза (8412)22-31-16
Петрозаводск (8142)55-98-37
Псков (8112)59-10-37
Пермь (342)205-81-47

Ростов-на-Дону (863)308-18-15
Рязань (4912)46-61-64
Самара (846)206-03-16
Санкт-Петербург (812)309-46-40
Саратов (845)249-38-78
Севастополь (8692)22-31-93
Саранск (8342)22-96-24
Симферополь (3652)67-13-56
Смоленск (4812)29-41-54
Сочи (862)225-72-31
Ставрополь (8652)20-65-13
Сургут (3462)77-98-35
Сыктывкар (8212)25-95-17
Тамбов (4752)50-40-97
Тверь (4822)63-31-35

Тольятти (8482)63-91-07
Томск (3822)98-41-53
Тула (4872)33-79-87
Тюмень (3452)66-21-18
Ульяновск (8422)24-23-59
Улан-Удэ (3012)59-97-51
Уфа (347)229-48-12
Хабаровск (4212)92-98-04
Чебоксары (8352)28-53-07
Челябинск (351)202-03-61
Череповец (8202)49-02-64
Чита (3022)38-34-83
Якутск (4112)23-90-97
Ярославль (4852)69-52-93

Россия +7(495)268-04-70

Казахстан +(727)345-47-04

Беларусь +(375)257-127-884

Узбекистан +998(71)205-18-59

Киргизия +996(312)96-26-47

эл.почта: gra@nt-rt.ru || сайт: <https://rayra.nt-rt.ru/>

DNP Series

KJELDAHL DISTILLERS

Steam distillation system for nitrogen analysis using the Kjeldahl method.

APPLICATIONS

- ✓ Protein nitrogen analysis according to the Kjeldahl method
- ✓ Analysis of other forms of nitrogen: urea, formaldehyde nitrogen, cyanide and ammonia
- ✓ Phenol analysis
- ✓ Volatile acidity
- ✓ Alcoholic strength by volume
- ✓ Determination of sulphur dioxide



BENEFITS

✓ Designed to sustain many years of laboratory work, fabricated with excellent construction materials, featuring a stainless steel external building.

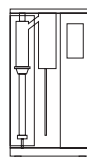
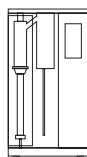
⬆️⬆️ Different models available with varying levels of automation to meet the user's specific needs.

🎯 Accurate, reproducible results in accordance with standardized analysis procedures.

📄 Includes 100 customizable programs with pre-installed methods for the most common applications.

📱 5" colour touchscreen and Wi-Fi connection for analysis of results on RAYPanet.

🕒 Specific menus for the calibration and cleaning of the reagent pumps.



SPECIFICATIONS

References	DNP-1500 TS	DNP-2000 TS	
External dimensions L x D x H mm	440 x 340 x 790	440 x 340 x 790	
Power W	1800	1800	
Voltage* V	230	230	
Weight Kg	30	31	
Reagent tank capacity	H ₂ O L	10	10
	NaOH L	10	10
	H ₃ BO ₃ L	-	5
Automatic addition of receiver solution H ₃ BO ₃	-	✓	
Automatic removal of sample residue after distillation	-	✓	
Automatic titration with external titrator	-	0	

✓: Included 0: Optional

*Other voltages and electrical configurations available on request.

DESCRIPTION

- 100 programs, including: preheating, washing, ammonium sulphate test and predetermined programs for the most common applications.
- Built-in steam generator of adjustable power and automatic water level control.
- All models come equipped with pumps for automating the addition of dilution water and alkaline solution (NaOH), as well as programs for calibrating and cleaning the pumps. The most advanced model includes an additional pump to automatically add receiver solution (H₃BO₃) and an automatic aspiration of sample residues.
- A microprocessor controls the equipment which features a 5" LCD display and Wi-Fi connection for analysis of results on RAYPAnet.
- Includes system for saving cooling water.
- External housing made of AISI-304 stainless steel painted with epoxy resin.
- System compatible with distillation tubes of different diameters and heights.
- Supplied with all necessary components, including distillation tube, connecting hoses and reagent tanks.

COMPARISON OF MODELS



DNP-1500



DNP-2000



DNP-2000 + Titrator

Automatic addition of dilution water	Automatic addition of dilution water	Automatic addition of dilution water
Automatic addition of NaOH	Automatic addition of NaOH	Automatic addition of NaOH
Manual addition of H ₃ BO ₃	Automatic addition of H ₃ BO ₃	Automatic addition of H ₃ BO ₃
Manual disposal of sample residue	Automatic aspiration of sample residue	Automatic aspiration of sample residue
Manual titration	Manual titration	Automatic titration

ACCESSORIES

KIT FOR AUTOMATIC TITRATION



Features

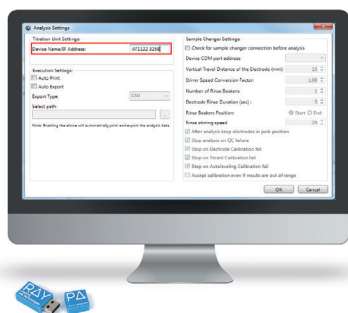
- Potentiometric titrator with colour display validated for use with Kjeldahl distillers.
- Features several titration programs and comes pre-installed with the most common distillation programs specific to DNP Series distillers.
- Results expressed as total nitrogen and protein percentage.
- Specific menus for maintenance, pH calibration, titrator calibration and automatic calibration of burettes.
- Equipped with two USB ports for copying analysis tests, extracting data and connecting a printer, keyboard or mouse.
- Equipped with user admin control and Ethernet port for optional software connection.
- Supplied with all necessary components, including reaction beakers, adapters, stirring bars, syringes and hoses.

Specifications

Reference		KIT-TITRA-RAY
Performance data	Resolution pH; mV	0,001; 0,1
	Reproducibility pH	±0,001
Installation requirements	Dimensions L x D x H mm	220 x 400 x 360
	Weight Kg	4
	Power W	80
	Voltage* V	230
	Frequency Hz	50/60
	Ambient temperature °C	15 - 35
	Ambient humidity %	20 - 80

*Other voltages and electrical configurations available on request.

EXTERNAL TITRATOR SOFTWARE

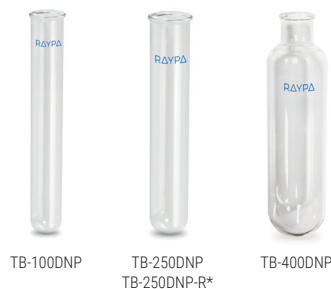


- Communication software between the titrator and a PC for display, management and export of real-time data directly from the workstation.
- An Ethernet connection cable is included with the purchase of this accessory.

Reference: SOFT-TITRA

DISTILLATION TUBES

- Glass distillation tubes for samples.



TB-100DNP

TB-250DNP
TB-250DNP-R*

TB-400DNP

References	TB-100DNP	TB-250DNP	TB-250DNP-R*	TB-400DNP
Dimensions Ø x H mm	26 x 300	42 x 300	42 x 300	80 x 300
Volume mL	180	325	325	1200
Recommended sample volume mL	100	250	250	400
Material	glass	glass	reinforced glass	glass

*Reinforced distillation tube for analysis of waste water and slurry.

RACK FOR DISTILLATION TUBES

- Rack for distillation tubes.
- Material: AISI-304 stainless steel.



References	GRA-1220	GRA-640	GRA-680
Dimensions L x D x H mm	122 x 177 x 150	122 x 177 x 150	209 x 308 x 172
Positions	12	6	6
Compatible distillation tubes	TB-100DNP	TB-250DNP & TB-250DNP-R	TB-80300

REACTION BEAKER



- Glass beaker for collecting distillates.

Reference	VR-75300
Dimensions Ø x H mm	80 x 95
Material	glass

ADAPTATION FOR BÜCHI® TUBES



- Adaptation to use Büchi® tubes on DNP Series Kjeldahl distillers.

Reference: ADAP-BU



По вопросам продаж и поддержки обращайтесь:

Алматы (727)345-47-04
Ангарск (3955)60-70-56
Архангельск (8182)63-90-72
Астрахань (8512)99-46-04
Барнаул (3852)73-04-60
Белгород (4722)40-23-64
Благовещенск (4162)22-76-07
Брянск (4832)59-03-52
Владивосток (423)249-28-31
Владикавказ (8672)28-90-48
Владимир (4922)49-43-18
Волгоград (844)278-03-48
Вологда (8172)26-41-59
Воронеж (473)204-51-73
Екатеринбург (343)384-55-89

Иваново (4932)77-34-06
Ижевск (3412)26-03-58
Иркутск (395)279-98-46
Казань (843)206-01-48
Калининград (4012)72-03-81
Калуга (4842)92-23-67
Кемерово (3842)65-04-62
Киров (8332)68-02-04
Коломна (4966)23-41-49
Кострома (4942)77-07-48
Краснодар (861)203-40-90
Красноярск (391)204-63-61
Курск (4712)77-13-04
Курган (3522)50-90-47
Липецк (4742)52-20-81

Магнитогорск (3519)55-03-13
Москва (495)268-04-70
Мурманск (8152)59-64-93
Набережные Челны (8552)20-53-41
Нижний Новгород (831)429-08-12
Новокузнецк (3843)20-46-81
Ноябрьск (3496)41-32-12
Новосибирск (383)227-86-73
Омск (3812)21-46-40
Орел (4862)44-53-42
Оренбург (3532)37-68-04
Пенза (8412)22-31-16
Петрозаводск (8142)55-98-37
Псков (8112)59-10-37
Пермь (342)205-81-47

Ростов-на-Дону (863)308-18-15
Рязань (4912)46-61-64
Самара (846)206-03-16
Санкт-Петербург (812)309-46-40
Саратов (845)249-38-78
Севастополь (8692)22-31-93
Саранск (8342)22-96-24
Симферополь (3652)67-13-56
Смоленск (4812)29-41-54
Сочи (862)225-72-31
Ставрополь (8652)20-65-13
Сургут (3462)77-98-35
Сыктывкар (8212)25-95-17
Тамбов (4752)50-40-97
Тверь (4822)63-31-35

Тольятти (8482)63-91-07
Томск (3822)98-41-53
Тула (4872)33-79-87
Тюмень (3452)66-21-18
Ульяновск (8422)24-23-59
Улан-Удэ (3012)59-97-51
Уфа (347)229-48-12
Хабаровск (4212)92-98-04
Чебоксары (8352)28-53-07
Челябинск (351)202-03-61
Череповец (8202)49-02-64
Чита (3022)38-34-83
Якутск (4112)23-90-97
Ярославль (4852)69-52-93

Россия +7(495)268-04-70

Казахстан +(727)345-47-04

Беларусь +(375)257-127-884

Узбекистан +998(71)205-18-59

Киргизия +996(312)96-26-47

эл.почта: gra@nt-rt.ru || сайт: <https://rayra.nt-rt.ru/>